

The Narrowest Bezel LG Video Wall Super-Narrow 3.5mm Bezel Premium Display

- ▶ 55LV75A-7B
- ▶ 55LV77A-7B

55" class (54.64" measured diagonally)



Display

SUPER NARROW BEZEL

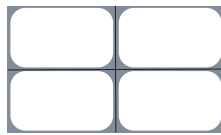
47" super narrow bezel 4.9mm and 55" super narrow bezel 3.5mm video wall displays create visually stunning digital wall that are easily installed, maintained and managed.



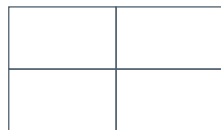
LV75A/LV77A
Bezel to Bezel
3.5mm
2.25mm (Left/Top)
1.25mm (Right/Bottom)

HIGHER BRIGHTNESS UNIFORMITY

Brightness uniformity 90% ensures high-quality image delivered across displays.



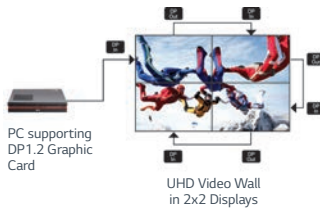
Conventional



LG

EVOLVED DAISY-CHAIN PERFORMANCE

DisplayPort1.2 connectors enable UHD content playback on 4K Video Wall in a 2x2 configuration. (available on LV75A/ LV77A)



PC supporting DP1.2 Graphic Card

UHD Video Wall in 2x2 Displays

VIVID IMAGERY VIEWING

TruMotion™ 60Hz Refresh Rate drastically reduces motion blur and judder ensuring vivid image details.



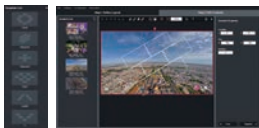
30Hz

60Hz

Software

SUPERSIGN VS FOR DYNAMIC LAYOUT

- Use included templates to easily configure content layout
- Rotate, cut and edit content according to a defined layout
- Flexible editing of content to match various layouts is possible
- Scheduled-based content playback based on time and day
- Distribute content to media players as well



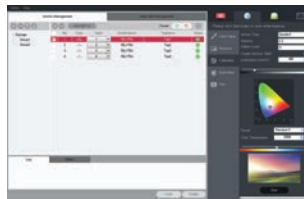
SuperSign V Editor



SuperSign V

FREE SUPERSIGN C FOR ADVANCED COLOR ADJUSTMENT

- Intuitive GUI in SuperSign C S/W allows to measure and adjust color and brightness instantly on display
- Automatic white balancing of a video-wall display using a sensor



SuperSign C

FREE SUPERSIGN C FOR REMOTE MONITOR AND CONTROL

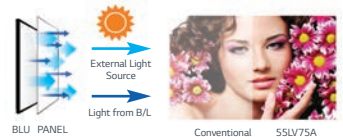
Intuitive GUI-based Remote Monitoring & Control via the networks and RS232 connection feature in SuperSign C S/W.



SuperSign C

SHINE-OUT (55LV77A)

Perfect fit for window display by reflecting away ambient light for best image visibility and clearer display in bright lighting environment.



BLU PANEL

Conventional 55LV75A

The Narrowest Bezel LG Video Wall

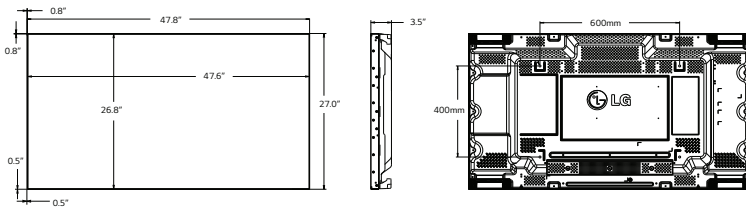
Super-Narrow 3.5mm Bezel Premium Display

▶ 55LV75A-7B

▶ 55LV77A-7B

55" class (54.64" measured diagonally)

Dimensions



Rear Jack Panel



PANEL	Model	55LV75A-7B	55LV77A-7B
	Panel Size	55" class (54.64" measured diagonally)	
	Panel Type	IPS	
	Aspect Ratio	16:9	
	Native Resolution	1920 x 1080 (FHD)	
	Pixels(H x V x 3)	6220800	
	Brightness	500 cd/m ²	700 cd/m ²
	Contrast Ratio (Typ.)	1,400:1	
	Dynamic CR (DCR)	500,000:1	
	Color Gamut	72%	
	Viewing Angle	178°/178°	
	Color Depth	1.06 Billion	
	Response Time	12ms (G to G)	
	Surface Treatment	Hard coating(3H), Anti-glare treatment of the front polarizer (Haze 10%)	
	Orientation	Portrait & Landscape	
VIDEO (PC)	Max Input Resolution	1920 X 1080@ 60Hz(RGB, HDMI, DVI-D, Display Port)	
	Recommended Resolution	1920 X 1080@ 60Hz(RGB, HDMI, DVI-D, Display Port)	
	H-Scanning Frequency	30 _ 83 kHz (RGB, HDMI, DVI-D, Display Port)	
	V-Scanning Frequency	56Hz _ 75Hz (RGB), 56Hz _ 60Hz (HDMI, DVI-D, Display Port)	
	Pixel Frequency	148.5MHz (RGB, HDMI, DVI-D, Display Port)	
	Sync Compatability	Separate / Composite / Digital	
	Video Input	RGB, HDMI, DVI-D, Display Port, AV, Component	
	Picture Mode	Vivid, Standard, Cinema, Sports, Game	
	Color Temperature	Warm, Medium, Cool	
	SIGNAL (INPUT)	Digital	DVI-D (1), HDMI (1), Display Port (1) with HDCP for all input
Analog		RGB (1), Shared Component (1), AV (1)	
Audio		PC Audio In (1)	
External Control		RS232C (1), RJ45 (1), IR Receiver (1)	
USB		USB (1)	
SIGNAL (OUTPUT)	Digital	Display Port (1)	
	Audio	Audio Out (1)	
	External Control	RS232C (1)	

CABINET	Model	55LV75A-7B	55LV77A-7B
	Color	Black	
	Bezel Width	2.25mm (left/top) / 1.25mm(right/bottom)	
	Monitor Dimensions (W x H x D)	47.8" x 27.0" x 3.5"	
	Weight (head)	50.7 lbs	51.1 lbs
	Carton Dimensions (W x H x D)	53.3" x 33.5" x 10.0"	
	Packed Weight	66.8 lbs	67.2 lbs
	Handle	Yes	
	VESA™ Standard Mount Interface	600mm x 400mm	
SPECIAL FEATURES	Temperature Sensor	Yes	
	Tile Mode	Yes, Up to 15 x 15 (Natural mode)	
	Source Selection	RGB / DVI-D / HDMI / Component / AV / Display Port / USB	
	Brightness/Contrast/Backlight	Yes	
	Position/Size	Yes	
	Auto Config/Phase	Yes	
	ISM Method	Normal, Orbiter, inversion, White wash	
	Advanced	Dynamic Contrast, Dynamic Color, Clear White, Skin Color, Noise Reduction, Digital Noise Reduction, Gamma, Black Level	
	Time	Clock, On/off Time, Sleep Timer, Power on Delay, Auto off, Automatic standby	
	Information	Model/Type, S/W Version, Serial Number, IP Address, Mac address, Homepage	
	Input Label	Yes	
	Auto Power/Source Memory	Yes	
	DPM Select	Yes	
	Energy Saving	Yes, Off / Minimum / Medium / Maximum / Screen Off	
	Smart Energy Saving	Yes	
File Play with USB	Yes		
PIP/PBP	Yes		
ENVIRONMENT CONDITIONS	Operation Temperature	0°C_40°C	
	Operation Humidity	10%_80%	
POWER	Power Supply	100-240V_ , 50/60Hz	
	Power Type	Built-in Power	
	Power Consumption		
	Normal On (Typ.)	160W	230W
	Power Save/Sleep Mode (Max)	90W	120W
	DPM	0.7W	
Power Off	0.5W		
STANDARD CERTIFICATIONS	Safety	UL / cUL / CB / TUV / KC	
	EMC	FCC Class "B" / CE / KCC	
	ErP / Energy Star	Yes / Yes(Energy Star 6.0)	
WARRANTY	3-Year Limited Warranty (Parts/Labor/Backlight)		
UPC		7 19192 19516 5	7 19192 19517 2
MEDIA PLAYER COMPATIBILITY	External Media Player Attachable	Yes	
SOFTWARE COMPATIBILITY	SuperSign Elite-w lite	Yes, Editing, Scheduling, Distribution & Play, Control	
	SuperSign Elite-c	Yes*	
ACCESSORIES	Remote Controller, Power Cable, DP Cable, Manual, IR Receiver, RS-232C Cable, Tiling Guide, Screw		

* SuperSign software is available at: <http://www.lg.com/us/commercial/video-walls>



LG Electronics U.S.A., Inc.
HE B2B Division
2000 Millbrook Drive
Lincolnshire, IL 60069

Customer Service: 888.865.3026
www.LGolutions.com/support

Contact your LG Regional Sales Representative:
Channel: 800.897.8871
Hospitality: 800.228.1236
E-mail: info@LGolutions.com



SPEC_LV77A_LV75A_071415_PR1



All screen images are simulated. Dimensions and weights are approximate. Design, specifications, and features subject to change without notice.

© Copyright 2014 LG Electronics USA, Inc. All Rights Reserved. "LG Life's Good" is a registered trademark of LG Corp.

ENERGY STAR is a registered trademark of the U.S. Environmental Protection Agency. In Plane Switching is a trademark of LG Philips LCD Ltd. VESA is a trademark of Video Electronics Standards Association. HDMI, the HDMI logo and High-Definition Multimedia Interface are trademarks or registered trademarks of HDMI Licensing LLC.

All other product and brand names are trademarks or registered trademarks of their respective companies.

Printed in the USA. November 2014